

**MICRO SWITCH**  
a Honeywell Division

FED. MFG. CODE 91 929

SWITCH - BASIC

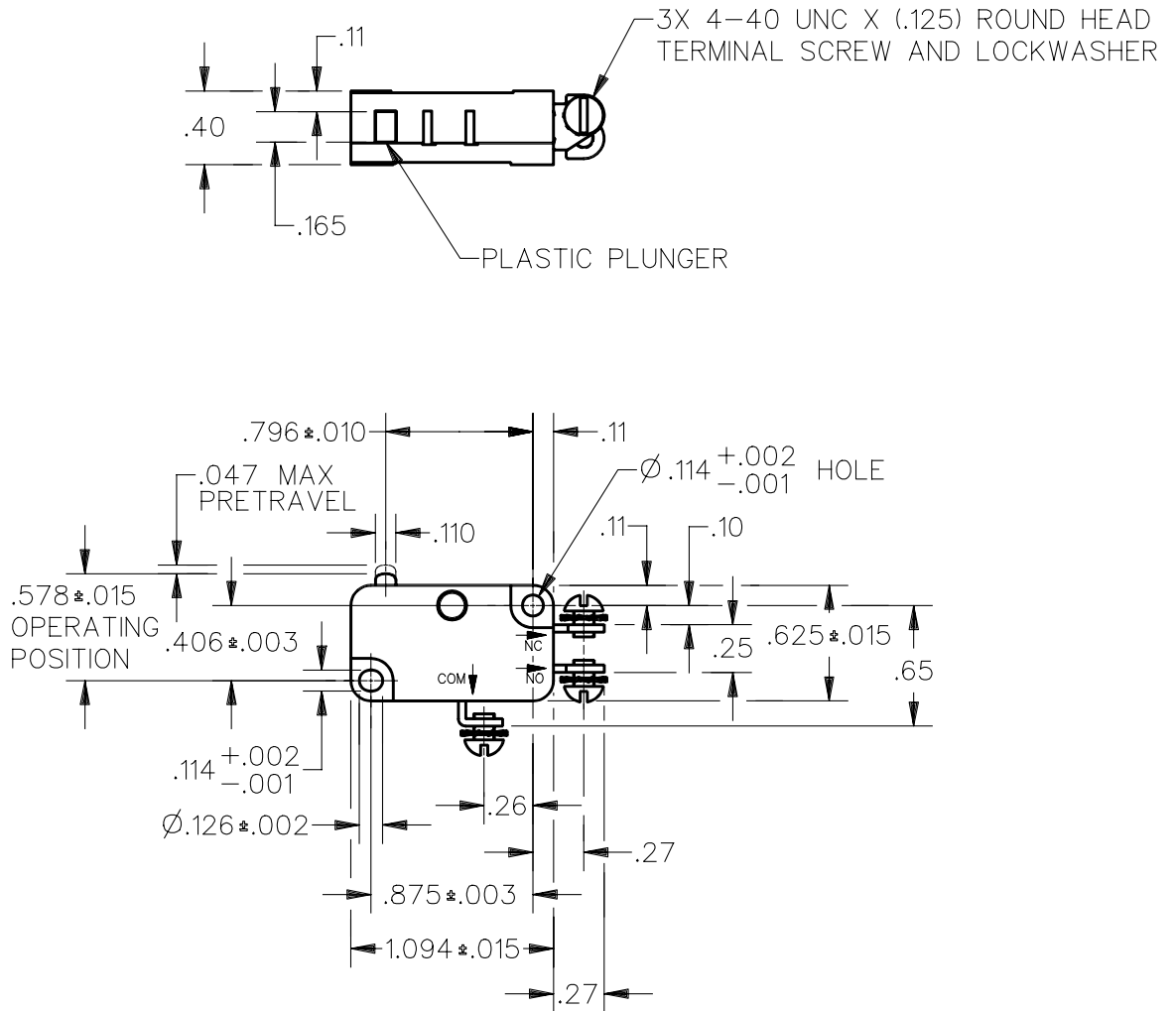
CATALOG LISTING

V3-245

CK-C4500

CATALOG LISTING  
V3-245  
PAGE 1 OF 1  
RELEASE NO.  
REPLACES  
ISSUE  
12

| REVISIONS |                                       |
|-----------|---------------------------------------|
| A         | OBS<br>C082209<br>CSL<br>18 OCT 96    |
| B         | RE-INST<br>PR22527<br>DCS<br>7 JAN 97 |

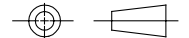


NOTE  
1 - SWITCH MATERIALS WILL WITHSTAND TEMPERATURE OF 400°F FOR 100 HOURS

ANSI Y14.5M-1982 APPLIES

THIS DRAWING COVERS A PROPRIETARY ITEM AND IS THE PROPERTY OF MICRO SWITCH, A DIVISION OF HONEYWELL. THIS DRAWING IS NOT TO BE COPIED OR USED WITHOUT THE APPROVAL OF MICRO SWITCH.

THIRD ANGLE PROJECTION



| CHARACTERISTICS  | ELECTRICAL DATA | SCALE FULL  | DO NOT<br>SCALE PRINT |
|--|-----------------|---|-----------------------|
|  |                 | <p>CONTACT ARRANGEMENT<br/>S P D T</p> <p>L118</p> <p>10A 1/8 HP 125 OR <u>250</u> VAC</p> <p>Ⓟ Ⓡ Ⓢ</p> |                       |
| <p>OPERATING FORCE — — — — 10-25 OZ</p> <p>RELEASE FORCE — — — — 6 OZ MIN</p> <p>DIFFERENTIAL TRAVEL — — — .006-.016</p> <p>OVERTRAVEL — — — — .040 MIN</p> <p>FREE POSITION — — — — .625 MAX</p> <p>RELEASE TRAVEL — — — — .007 MIN</p> |                 | <p>WEIGHT .017 LB</p>   |                       |

DDM/CAD  
DRAWN  
DCS  
7 JAN 97  
CHECK